

## FAX-2840 Environmentally Friendly Printing

Our commitment to the environment is brought to life with a range of eco friendly features and the attainment of a range of environmental labels and awards:

- **Separate Toner & Drum:** Less wastage and reduced print costs.
- **Toner Save:** The Eco feature uses less toner, which can help you to reduce your print spend.
- **N-in-1:** Reduce paper consumption by up to 75% by copying multiple pages onto a single sheet of paper.
- **Sleep Mode:** Consumes only 1.5 watts of power when not in use, which is over 36 times less energy than in the standard ready mode.



### GENERAL

Technology	Electrophotographic monochrome laser printer
Laser Notice Processor	Class 1 Laser Product (IEC 60825-1:2007)
Memory	ARM9 200MHz
Display	16MB 2 lines x 16 characters

### MONO FAX

Modem Speed	33.6Kbps (Super G3)
One Touch Dials	22 (11 x 2)
Speed Dials	200
Group Dials	8
Distinctive Ring Detection	Ability to detect different ring styles (UK & Denmark only)
Fax Forward & Retrieval	Forward or retrieve faxes to or from another location
Transmit / Receive Memory	Up to 400 pages <sup>3</sup>
Error Correction Mode (ECM)	Resending of failed documents where sending fax shares ECM

### MONO COPIER

Copy Speed A4	Up to 20cpm (copies per minute)
Resolution	300 x 600 dpi
First Copy Out Time	Less than 12 seconds (from ready mode)
Multi-Copying / Stack / Sort	Makes up to 99 copies of each page (stacks or sorts)
Reduction / Enlargement Ratio	Reduce & enlarge documents from 25% to 400% using 1% increments
N in 1 Copying	Allows the user to compress 2 or 4 pages on to a single A4 sheet

### PAPER HANDLING

Paper Input	250 sheet standard paper tray 1 sheet manual paper feed slot 30 sheet Automatic Document Feeder (ADF) <sup>4</sup>
Paper Output	100 sheets face down 1 sheet face up (straight paper path)

### MEDIA SPECIFICATIONS

Media Types & Sizes	Standard Tray - Plain & recycled paper (between 60 - 105 g/m <sup>2</sup> ) Manual Paper Feed Slot - Plain, recycled & bond paper (between 60 - 163g/m <sup>2</sup> ) ADF (Automatic Document Feeder) - Plain paper & recycled paper (between 64 - 90 g/m <sup>2</sup> )
Media Weights	Standard Tray - A4, Letter, B5(SO/JIS), A5, A5(Long Edge), B6(ISO), A6, Executive Manual Paper Feed Slot - Width: 76.2mm to 216mm x Length: 116mm to 406.4mm ADF (Automatic Document Feeder) - Width: 147.3mm to 215.9mm x Length: 147.3mm to 355.6mm

### SUPPLIES

Inbox Toner	Approx. 1,000 pages <sup>1</sup>
Standard Toner	TN-2210 - Approx. 1,200 pages <sup>1</sup>
High Yield Toner	TN-2220 - Approx. 2,600 pages <sup>1</sup>
Drum	DR-2200 - Approx. 12,000 pages (one job per page)



### WEIGHTS & DIMENSIONS

With Carton	476 x 458 x 436 mm / 12.7kg
Without Carton	368 x 360 x 311 mm / 8.8kg

### ENVIRONMENT

Typical Electrical Consumption	0.8 kWh / Week
Power Consumption	360W active, 55W ready, 1.5W deep sleep
Sound Pressure	53dBA active, 30dBA ready
Sound Power	6.18dB active, 4.25dB ready
Power Save	Consume less energy when not in use
Toner Save	Reduces toner usage



### DUTY CYCLE

Recommended Monthly Print Volume	250 to 2,000 pages
Maximum Monthly Volume	10,000 pages <sup>2</sup>

<sup>1</sup>Declared yield value in accordance with ISO/IEC19752

<sup>2</sup>Maximum number of printed pages per month and can be used to compare designed durability between like Brother products. For maximum printer life, it is best to choose a printer with a duty cycle that far exceeds your print requirements

<sup>3</sup>Based on the ITU-T Test Cart, Standard Resolution, JBIG

<sup>4</sup>Maximum capacity based on using 80g/m<sup>2</sup> paper

# FAX-2840

brother  
at your side

# HIGH SPEED COMMUNICATION FOR YOUR OFFICE



Contact:

brother  
at your side

**Brother International Corporation (Ireland) Ltd**

Boeing Road, Airways Industrial Estate, Santry, D.17,

Tel:+353(0)1-241 1900 Fax:+353(0)1-842 4666

Email: sales@brother.ie Web-site: www.brother.ie

All specifications correct at time of printing. Brother is a registered trademark of Brother Industries Ltd. Brand product names are registered trademarks or trademarks of their respective companies.

**THE BROTHER FAX-2840 HAS THE  
FEATURES & TECHNOLOGY TO HELP  
YOU WORK MORE EFFICIENTLY**



**Features to optimise your workflow**

- High speed Super G3 fax
- 2 line LCD
- 22 One-Touch Dials
- 400 page memory transmission<sup>3</sup>
- 30 sheet Automatic Document Feeder<sup>4</sup>
- 250 sheet lower paper tray
- High speed copy at up to 20cpm
- 1,000 page toner cartridge included<sup>1</sup>

## TAKE THE HASSLE OUT OF FAXING

Whatever your purpose, the Brother FAX-2840 has the features and technology to help you work more efficiently. The compact stylish design delivers professional performance with enhanced capabilities such as N-in-1-copy, which improves productivity and reduces paper costs.

### PRODUCTIVE

Equipped with 22 One-Touch Dials and a copy speed of up to 20cpm the most demanding document handling requirements are dealt with. An intuitive control panel with dedicated function keys enables users to get the results they need quickly and easily.

### VERSATILE

With fax and copy functionality, the FAX-2840 offers flexibility and lets you work hassle free. A range of innovative features ensure that your office has the necessary functionality needed to thrive in the modern world of business.

### FLEXIBLE

The standard 250 sheet lower tray offers flexibility and gives you greater paper capacity, allowing more copying time before paper replenishment is needed. A range of multipage documents can be faxed or copied using the 30<sup>+</sup> page automatic document feeder saving time and resource.



### RELIABLE

If the machine is out of paper, up to 400<sup>+</sup> pages can be stored in the fax memory ensuring important information is recovered when the paper is replenished.

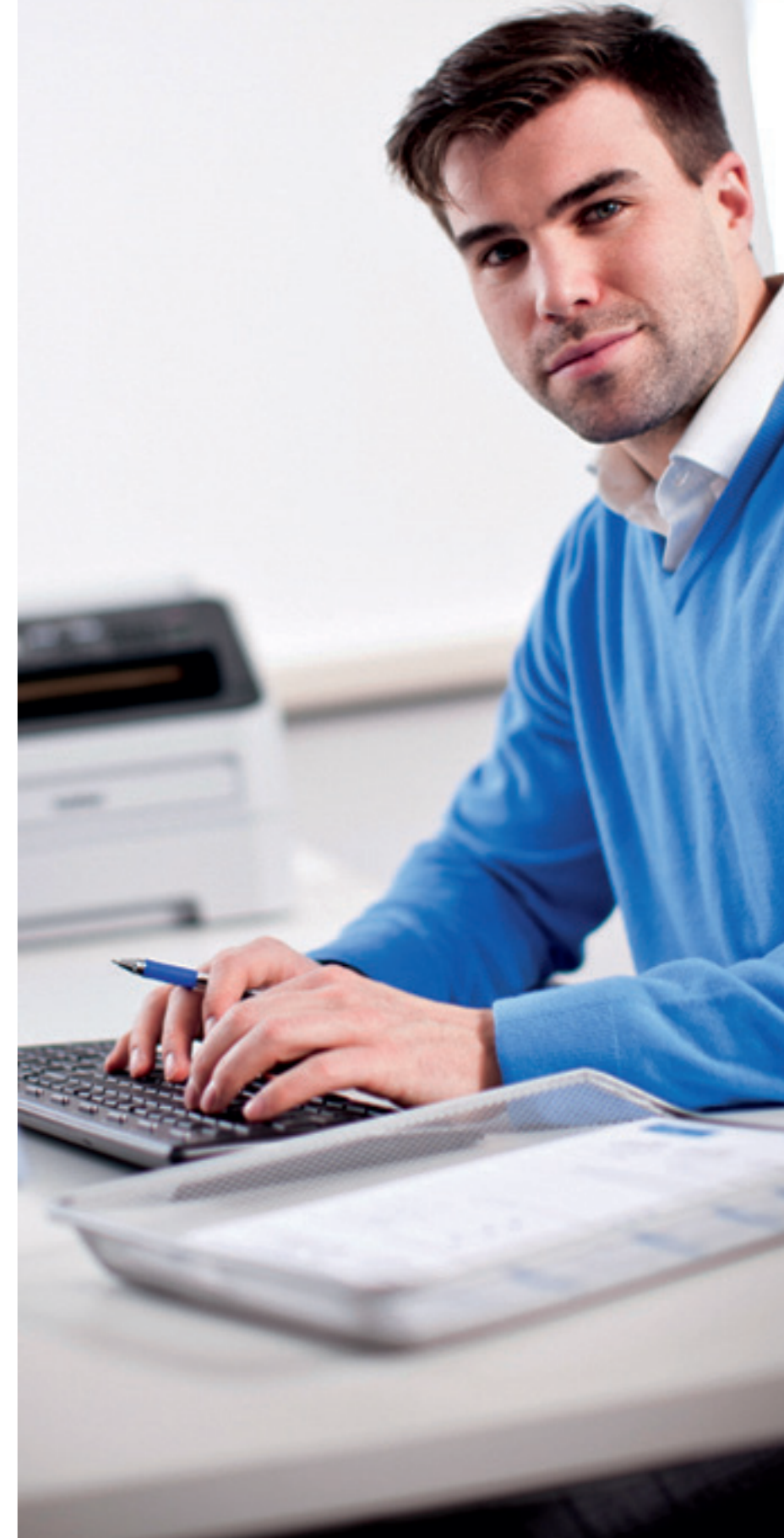
### COST EFFECTIVE

A range of cost effective supplies to meet the demands of your office are available. The optional high yield toner cartridge together with the separate drum unit means you can be sure of exceedingly low running costs.

### COMPACT

With office space at a premium the smart robust, compact design of the Brother FAX-2840 is designed to fit in, making it work in even the smallest of spaces.

“Productive and reliable, the Brother **FAX-2840** is the dependable high speed office communication partner”



## IMPROVE PRODUCTIVITY WITH ADVANCED FAX FEATURES

The Brother Fax-2840 is designed to deliver fast and efficient fax communication.



22  
ONE-TOUCH DIAL

The controls include 22 One-Touch Dials and 200 Speed Dials this ensures the most demanding document handling requirements are dealt with.



214  
CONTACTS

When you need to send documents to multiple locations you can use the Brother FAX 2840 to store up to 214 contacts, in up to 8 separate groups or lists for group dialling.



33.6  
kbps  
FAX

A 33.6Kbps modem speed makes for fast fax communication and enhanced efficiency. Combining this with 16MB of memory means that you can store up to 400<sup>+</sup> pages of information.

200  
SPEED DIALS